

U.T .Creek-Leckie Park and precinct - Summary of Planning and Development

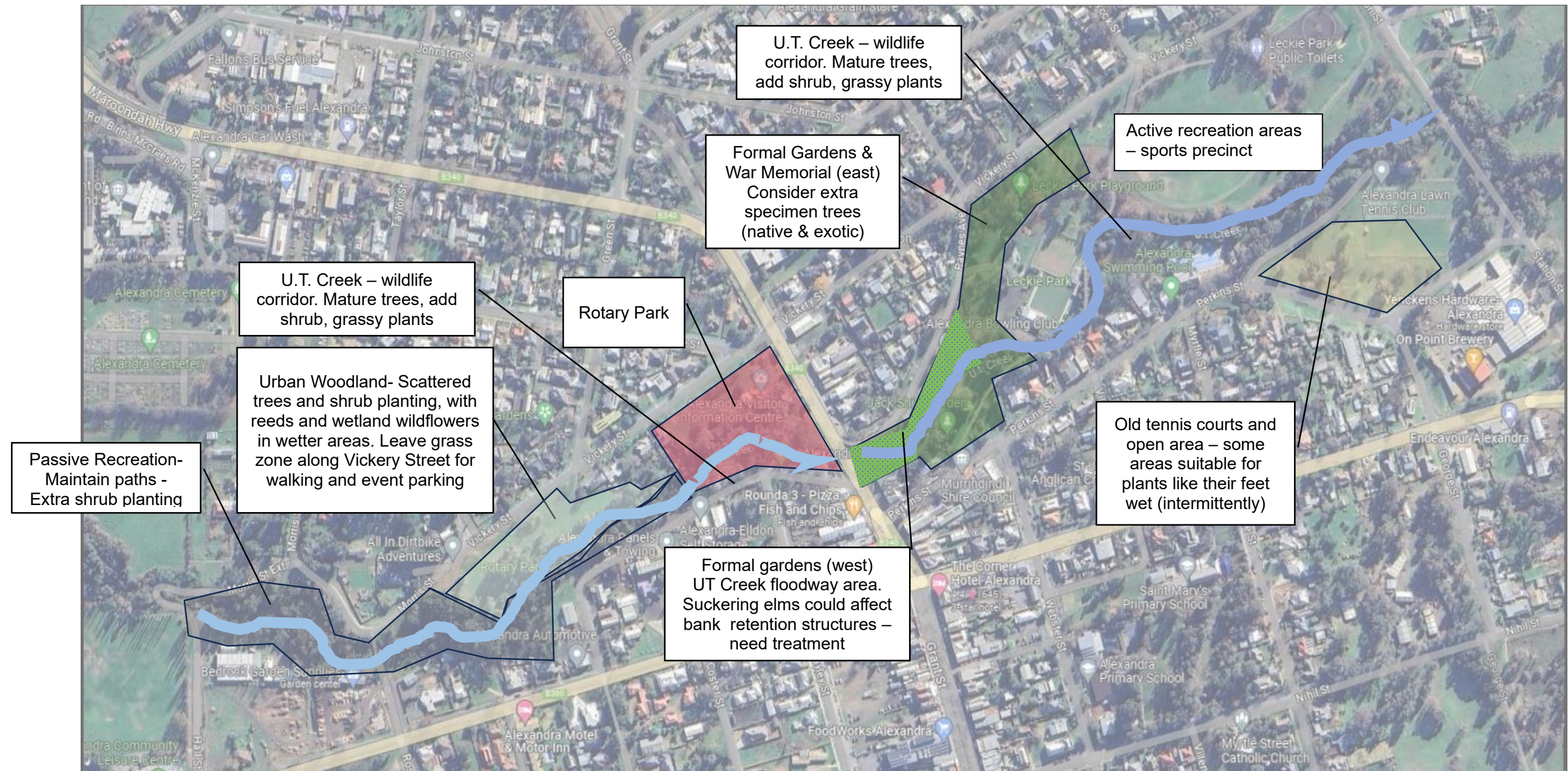
Previous Planning – U.T. Creek Master Plan

The U.T. Creek 2005 Master Plan covered the whole of the U.T. Creek-Leckie Park precinct and was adopted by Council in 2007. This plan recognised 6 zones within the precinct, each with a different focus. The zones map is shown on the next page.

Zone (see map next page)	Focus of planning and development since 2007
U.T. Creek bed and banks	Improve the appearance of the creek and its banks with the long term aim of creating a natural waterway using flora that is mostly indigenous to provide a corridor for native birds and animals. This planting should be continuous enough for wildlife corridor purposes, but must allow adequate access and view for park users to the creek. The creekside planting could extend up to 10m, depending on other adjacent uses. Where existing plants sucker and become invasive weeds (eg elms), they may be removed. Other existing mature trees, both exotic and native, will remain.
Active recreation zone	This is the area of the reserve , within which Active Recreation should be concentrated, including the existing and any future sporting activities. This includes complementary passive recreation opportunities. The major walking track will be a significant facility for both pleasure and active recreation.
Formal gardens and war memorial	Future development of this area should recognise the formal nature of their existing condition, particularly Jack Shiel Gardens, which should be a guide to the rest of this Zone. Tree planting should include imported deciduous trees and native species.
Rotary Park including Visitor Information Centre & playground	Developed as a public park by the rotary club and Council, with a current need to meet ceremonial needs eg, Australia Day, serve as a focus and venue for major events (eg Easter Fair, Truck, Ute & Rod Show, Carols by Candlelight, Senior Citizens Lunch etc. Houses visitor information, and provides a welcome to visitors with toilets and picnic facilities
Urban woodland adjacent to the creek	Creation of grassy woodland areas of clumps of indigenous trees and shrubs, supplemented by native grasses and wildflowers in suitable areas. This would be the character along the creek with wider areas along the creek west of Grant Street. Complemented by gravel paths wandering through and around the clusters of trees and shrubs. Maintain open safe areas for family picnics and games. Overflow Parking for major events at Rotary Park is acceptable. (section along Vickery Street, west of Green Street)
Passive recreation and pathways	Primarily walking/cycling tracks along the U.T. Creek, passing through parkland, along the edge of the U.T. Creek, with feeder tracks to attractions such as Timber & Tramway Museum and Youth Precinct

This information and mapping is drawn from the complete UT Creek Masterplan is on Council's website at <https://www.murrindindi.vic.gov.au/Your-Council/Publications/Strategies-and-Plans>

VISUAL SUMMARY OF U.T. CREEK – LECKIE PARK PRECINCT PLANNING



Walking path west of Grant Street



Formal area near Grant Street during flood



Leckie Park – formal gardens in autumn



Formal Gardens – passive use

What has been achieved so far?

The development of the U.T. Creek-Leckie Park precinct has been a collaboration of many groups, including hundreds of volunteer hours contributed.

- Council maintaining the lawns, vegetation, paths and equipment in the precinct
- Installation of pathways (Rotary and Council)
- Installation of exercise hubs (Rotary)
- Council undertaking weed control and revegetation of UT Creek area, including some tree species (eg elm) that sucker in the creek
- Schools and U.T. Creek Landcare participate in rubbish removal, revegetation and environmental education, including Clean Up Australia Day and National Tree Day activities
- Assessment of tree health and succession planning
- Collaboration with Alexandra Open Gardens with tree inclusion (Jeffers Red circle, tree identification labels).
- Council cleaning up after flood and installing bank stabilization structures